

THE
Microlift
SERVICE LIFTS RANGE
50 & 100kg



*THE MOST VERSATILE RANGE
OF HIGH QUALITY GOODS
AND SERVICE LIFTS*

Microlift

SERVICE LIFTS

- Food ■ Drinks ■ Documents
- Industrial equipment ■ Small

● Wide range

Four 50kg and two 100kg stock models cater for every lifting requirement – from food, laundry and documents to beer crates and barrels, small trolleys and industrial equipment.

● Quick, simple installation

The Microlift operates inside a rapidly-erected, structure supported frame which is easy to install and requires minimal builder's work. No separate motor room or load-bearing shaft is needed, which helps to keep costs down.

● Available from stock*

All standard models (except Double Decker) are normally available from stock, which means that a Microlift can be installed and working within a few days, depending on the building work.

● Proven quality & reliability

Over 60,000 installations throughout the world are convincing proof of Microlift engineering quality and reliability.

● Choice of finishes

The finish of the lift car and rise and fall shutters can be tough grey baked enamel or stainless steel.

* Combi and bespoke models available on request

OPTIONS:

LOW HEADROOM

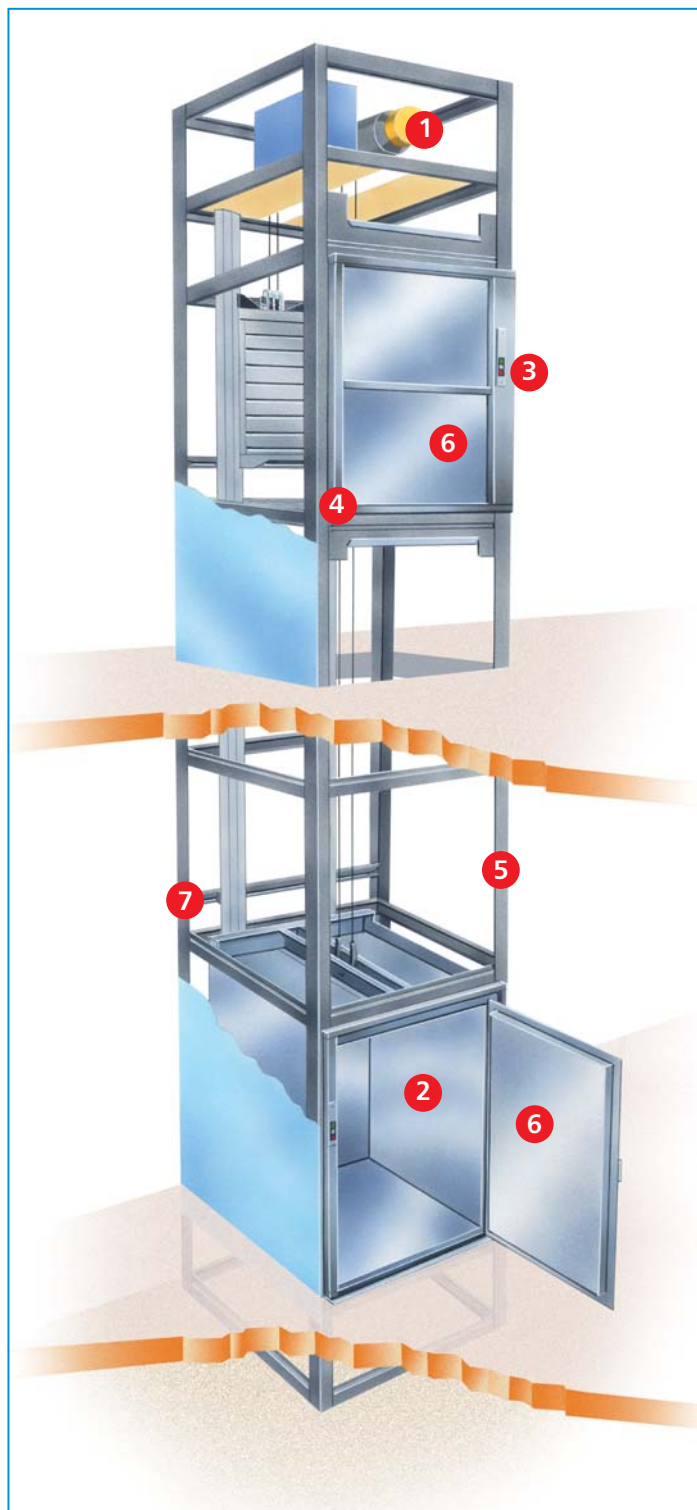
DOUBLE DECKER



Provides a significant reduction in the headroom required at the top floor.



Two cars in one lift



- 1 Quiet and efficient motor
- 2 Easy-clean finish
- 3 Robust push-buttons, fully automatic control
- 4 Interlocked entrances for extra safety
- 5 Galvanised framework for long life
- 6 'Rise and fall' shutters, or hinged doors for ease of access
- 7 Structure supported frame

STANDARD STOCK DIMENSIONS

ALL DIMENSIONS ARE NOMINAL AND IN MM

50kg Microlift

MODEL	CAPACITY	CAR			ENTRANCE		SERVING HEIGHT (variable)	SHAFT		PIT DEPTH	HEAD-ROOM
		WIDTH	DEPTH	HEIGHT	WIDTH	HEIGHT		WIDTH	DEPTH		
DD50	50kg	510	320	800	320 [§]	770	800	725	520	-	2600
50A	50kg	545	420	800	420 [§]	770	800	820	640	-	2600
50B	50kg	520	520	800	420	770	800	800	800	-	2600
50C	50kg	620	620	800	520	770	800	900	900	-	2600

100kg Microlift

MODEL	CAPACITY	CAR			ENTRANCE		SERVING HEIGHT (variable)	SHAFT		PIT DEPTH	HEAD-ROOM
		WIDTH	DEPTH	HEIGHT	WIDTH	HEIGHT		WIDTH	DEPTH		
100A WITH RISE AND FALL SHUTTERS	100kg	720	720	1000	620	970	800	1000	1000	-	2800
100A WITH HINGED DOORS	100kg	720	720	1000	550	890	FLOOR	1000	1000	350*	2000
100B WITH RISE AND FALL SHUTTERS	100kg	820	820	1200	720	1170	800	1100	1100	-	3000
100B WITH HINGED DOORS	100kg	820	820	1200	600	1090	FLOOR	1100	1100	350*	2200

Low Headroom - 50kg

MODEL	CAPACITY	CAR			ENTRANCE		SERVING HEIGHT (variable)	SHAFT		PIT DEPTH	HEAD-ROOM
		WIDTH	DEPTH	HEIGHT	WIDTH	HEIGHT		WIDTH	DEPTH		
50C LH	50kg	620	620	800	520	770	800	900	900	-	2200

Double Decker - 50kg and 100kg

MODEL	TOTAL CAPACITY	CAR#			ENTRANCE#		SERVING HEIGHT (variable)	SHAFT		PIT DEPTH	HEAD-ROOM
		WIDTH	DEPTH	HEIGHT	WIDTH	HEIGHT		WIDTH	DEPTH		
50B DD	50kg	520	520	800	420	770	Top car: 1010 Floor Bottom car: Floor	800	800	350	3000
50C DD	100kg	620	620	800	520	770	Top car: 1010 Floor Bottom car: Floor	900	900	350	3000
100A DD	100kg	720	720	800	620	770	Top car: 1010 Floor Bottom car: Floor	1000	1000	350	3000
100B DD	100kg	820	820	800	720	770	Top car: 1010 Floor Bottom car: Floor	1100	1100	350	3000

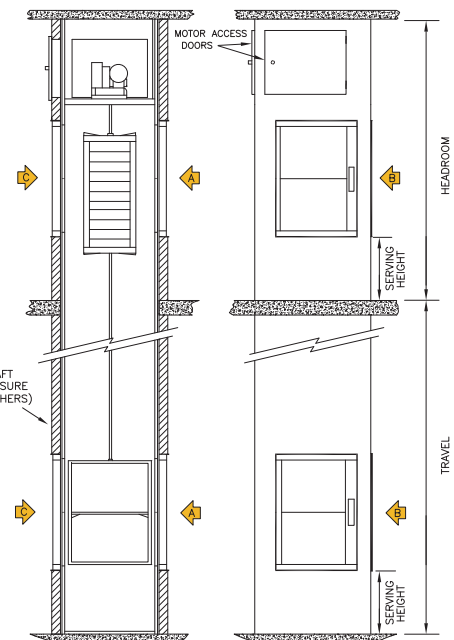
Note:

Some of the above dimensions can be varied to suit your individual requirements by special manufacture – please contact us for details.

§ Entrance position 'B' is not available on the DD50 model but can be provided on the 50A model with a reduced entrance width of 320mm.

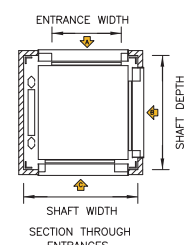
* For 100kg lifts with hinged door option, if floor level serving height is required then a pit will be necessary. A reduction in the standard pit depth is possible – please contact us for details.

Car and Entrance dimensions on Double Decker models are nominal.



TYPICAL SECTION THROUGH 'C' AND 'A' ENTRANCES

TYPICAL FRONT ELEVATION FROM 'C' FACE



Choice of entrance arrangements

Up to three way entry on most models. The sectional plans above show the many arrangements available with the Microlift.

ts ■ Crates
all trolleys ■ Laundry

INSTALLATION NOTES AND BUILDER'S WORK:

Builder's work

Preliminaries

The Microlift can be installed by our fitters in just a few days with the minimum disruption to premises. Preliminary builder's work is straightforward. All that is normally required prior to installation is an appropriately-sized opening in each floor, a flat level base capable of supporting downward deadloads and an electrical power supply at the top floor served.

We can provide your builder with exact builder's work details and drawings for your installation and, where necessary, liaise directly with the builder to ensure the whole operation runs smoothly.

After the installation

Your builder will need to provide an enclosure around the Microlift to protect against moving parts and conform with your local fire regulations. Permanent safe access to the motor must be provided to comply with current safety regulations. The lift installation and associated builder's work should comply with the Supply of Machinery (Safety) Regulation 1992 and be 'CE' marked accordingly.

Installation Notes

Headroom: The floor to ceiling height on the top floor served must be able to accommodate the winding unit. If there is insufficient headroom, we can make substantial reductions with our 'Low Headroom' or bottom drive option and suggest you contact us for details.

Serving height: This is normally set at 800mm but is fully adjustable before installation. To accept trolleys, the serving height can be at floor level – contact us for details.

Shaft: These dimensions give the minimum inside shaft width and depth that must be provided to enable your Microlift to be installed.

Microlift

GOODS & SERVICE LIFTS 50 & 100kg

BRIEF SPECIFICATION:

Load:	50kg and 100kg.
Car:	Constructed in mild steel, finished in grey baked enamel with a stainless steel base and a removable stainless steel shelf. The car can also be finished in stainless steel.
Landing Entrances:	High quality rise and fall shutters or hinged doors are fitted with safety locks and can be finished in either grey baked enamel or stainless steel.
Car Entrance Protection:	Whilst it is not essential to fit doors onto the car itself, it is highly recommended to do so. If doors are not fitted, other means of restraining the goods should be assessed and provided. Stainless steel rise and fall doors are available for all models, whilst collapsible gates are available on all models as an option.
Mounting:	The Microlift is supplied in a structure-supported frame which is galvanised for longer life. We do not require a separate motor room or 'load-bearing' lift shaft. For more information, please ask for our builder's work detail.
Floors served:	Can serve up to 12 floors.
Speed:	0.35m/s (70ft/min).
Controls:	Fully automatic push button control, with call and despatch facilities at each entrance. For that extra reassurance, 'lift arrival', 'lift occupied' and 'lift position indicators' together with an 'arrival buzzer' are fitted as standard.
Operation:	The operation is smooth and quiet with a highly efficient motor winding unit with a reliable controller. Combined with a counter-balance drive system, this ensures electrical consumption is minimal.
Winding Unit:	Mounted at the top of the lift structure within the headroom dimensions shown overleaf. The motor drives a high quality reduction gearbox fitted with a traction vee-sheave. An electro-magnetic disc brake is supplied, with emergency release mechanism.
Electric Supply:	415 Volt-3 phase-50Hz or 240 Volt-1 phase-50Hz. A 15 amp isolator should be supplied for the lift by your electrician to be fixed adjacent to the lift at the top floor served.
Installation:	A 2-floor Microlift normally takes us 1-2 days to install depending on site conditions.
Delivery:	Normally available from stock.
Enclosure:	Normally by others.
Maintenance:	We recommend the Microlift is serviced and inspected every 3 months by competent lift engineers. This is to ensure efficient and reliable operation. We can arrange servicing after installation.
Guarantee:	The Microlift is guaranteed for twelve months from completion of installation, subject to it being serviced regularly by our engineers.
Policy:	We are continually developing and improving the Microlift range and reserve the right to alter specifications, dimensions and prices without prior notice .
Safety:	Once installed, tested, commissioned and all the building work is complete, the Microlift will comply with the Essential Safety Regulations (ESRs) of the Supply of Machinery (Safety) Requirements 1992, otherwise known as the Machinery Directive and EN81-3 where applicable.



LANDMARK LIFTS LTD

29 CHARTER GATE, QUARRY PARK CLOSE, MOULTON PARK,
NORTHAMPTON NN3 6QB

t 0800 652 8138 f 01604 495 111 e info@landmarklifts.co.uk

www.landmarklifts.co.uk

Note - all details are correct at time of completion, however, all data may be subject to change without prior notice. These details cannot form part of a written contract