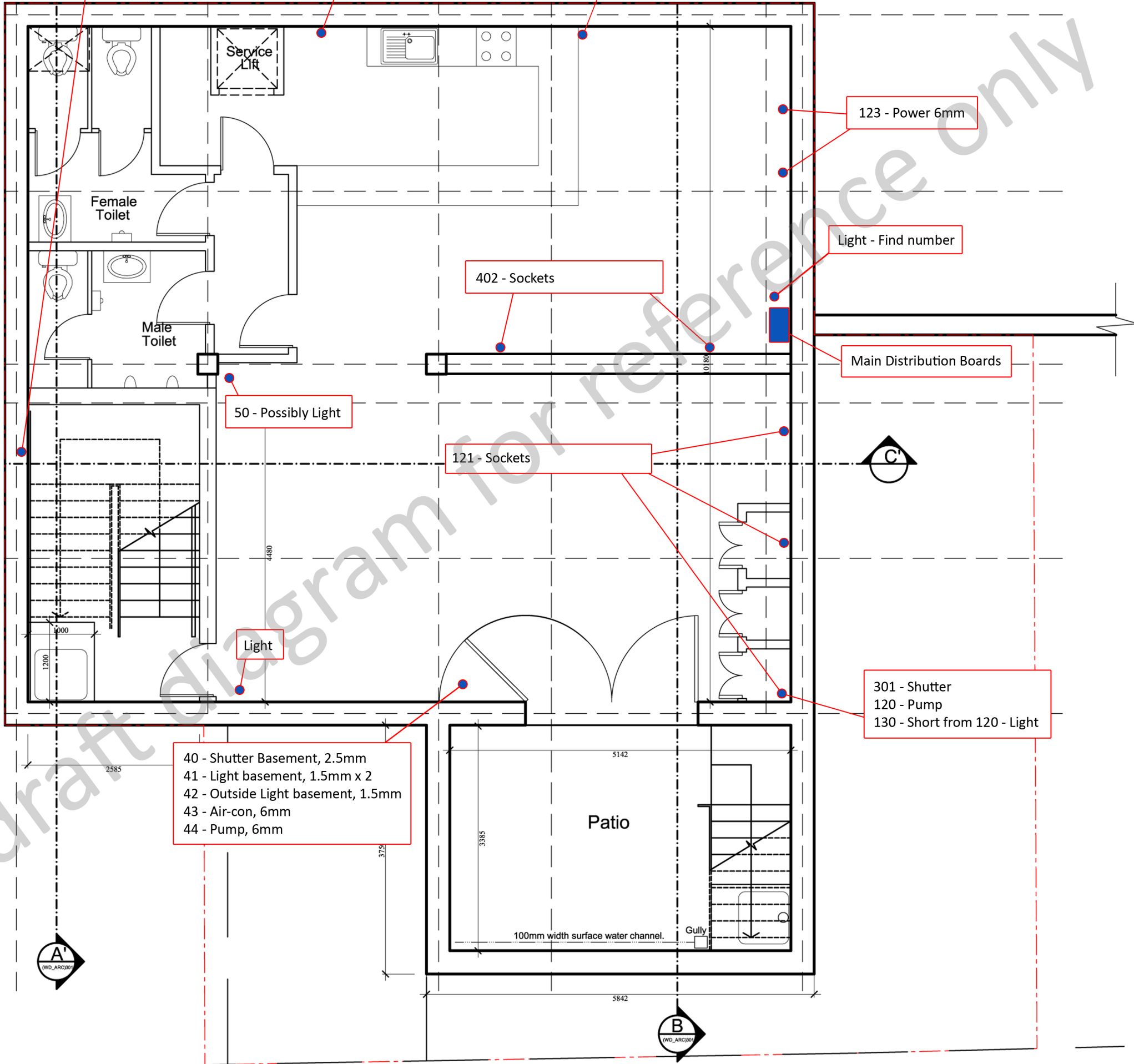


- 50 - Light toilet, 1.5mm
- 51 - Light hallway, 1.5mm
- 52 - Hot water, 2.5mm
- Pump under stairs - Live
- 53 - Pump, 6mm

- 7 - Bain Mari 13amp 2.5
- 6 - Basement light 1.5
- 4 - Basement dishwasher 6mm, how water tank

- 14 - Fridge 2.5
- 15 - Light base 1.5, fan-air
- 12 - Main ring 6mm, basement
- * - 3 Phase for pryer



Basement